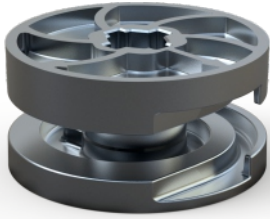
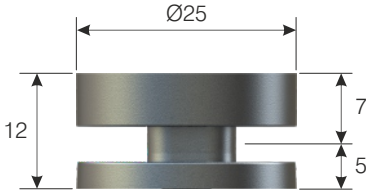


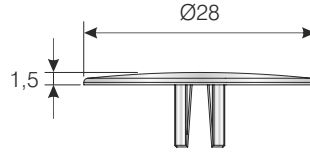
SİPARİŞ KODU ORDER CODE	F	AÇIKLAMA / DESCRIPTION	M	LxWxH	Ad Pcs
				kg	Ad Pcs
102-10-01	403	Fixa Ø25 Gövde Fixa Ø25 Head	Zamak Zamac	29 x 19 x 25	-
				8,100 kg	500
102-10-21	402, 413	Fixa Ø25 Metal Tıpa Fixa Ø25 Metal Cap	Zamak Zamac	29 x 19 x 12,5	-
				11,800 kg	2.000
102-91-22	402, 413	Fixa Ø25 Metal Tıpa Fixa Ø25 Metal Cap	Zamak Zamac	29 x 19 x 12,5	-
				8,600 kg	2.000



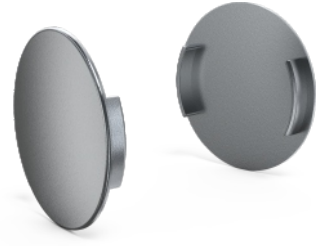
102-10-01



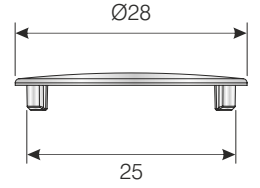
102-10-21



16-18mm Panel için  
for 16-18mm Chipboard



102-91-22



18mm ve üzeri Paneller için  
for 18mm and higher  
chipboard thickness



ÜRÜN VİDEOSU İÇİN  
KODU TARATINIZ.  
SCAN CODE FOR  
PRODUCT VIDEO.

- ◆ Kavela ile birlikte kullanılmalıdır.
- ◆ Used with a plastic dowel

- ◆ Fixa gövdeye 15 N.m kuvvet uygulanabilir.
- ◆ Up to 15 N.m rotation force can be applied